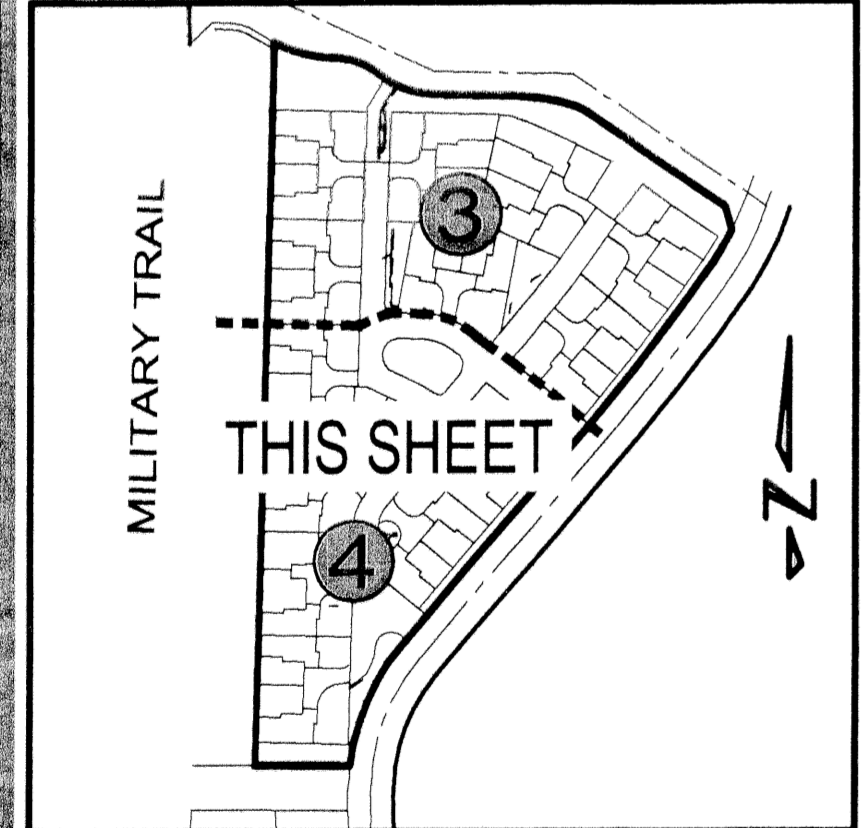
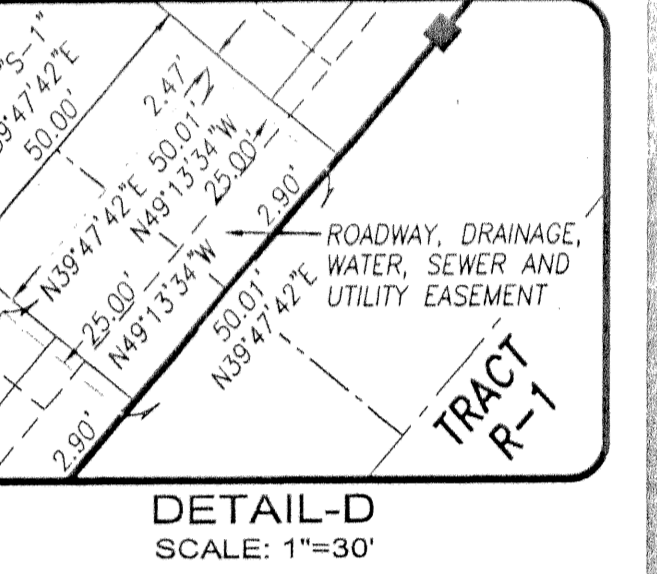
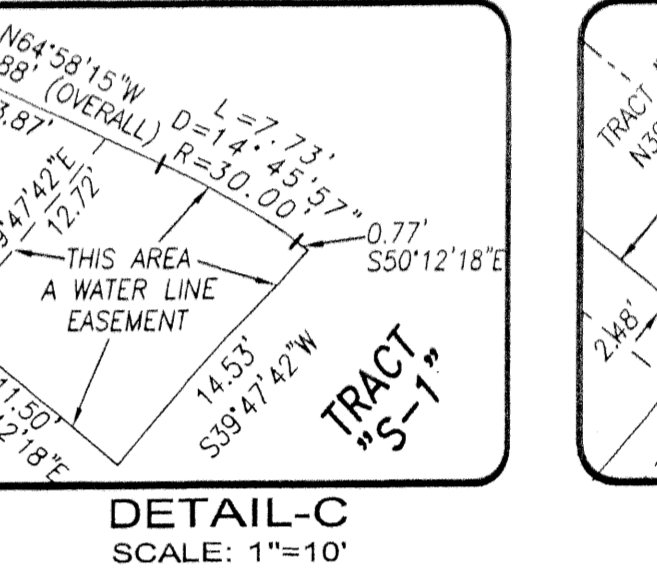
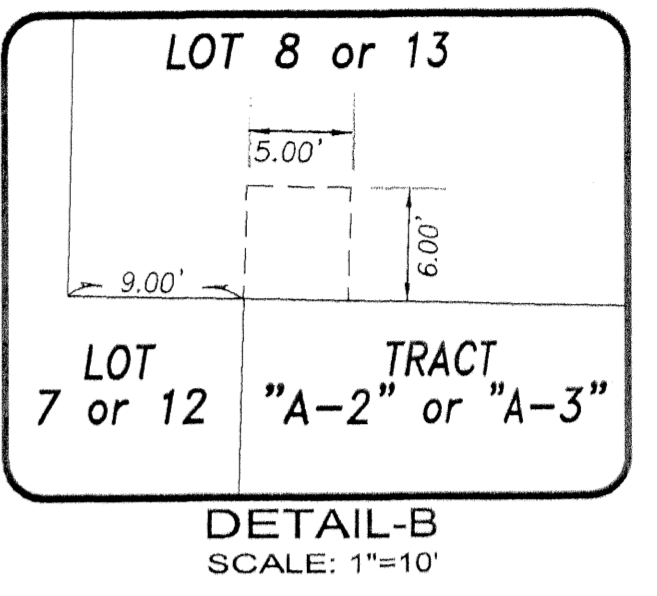
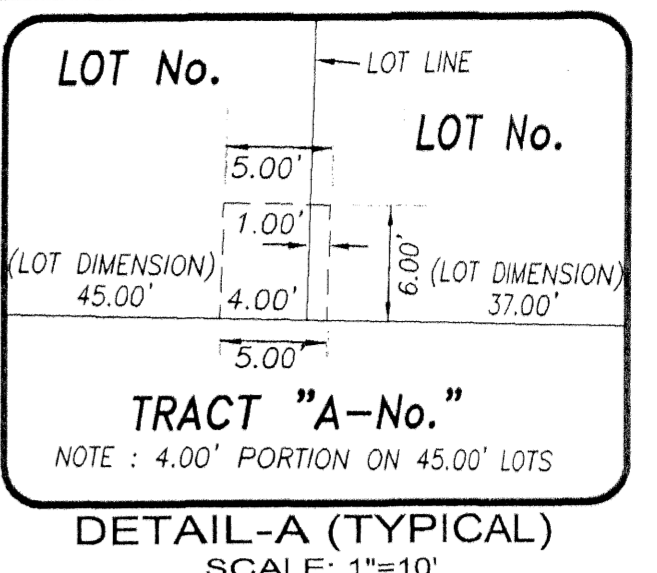
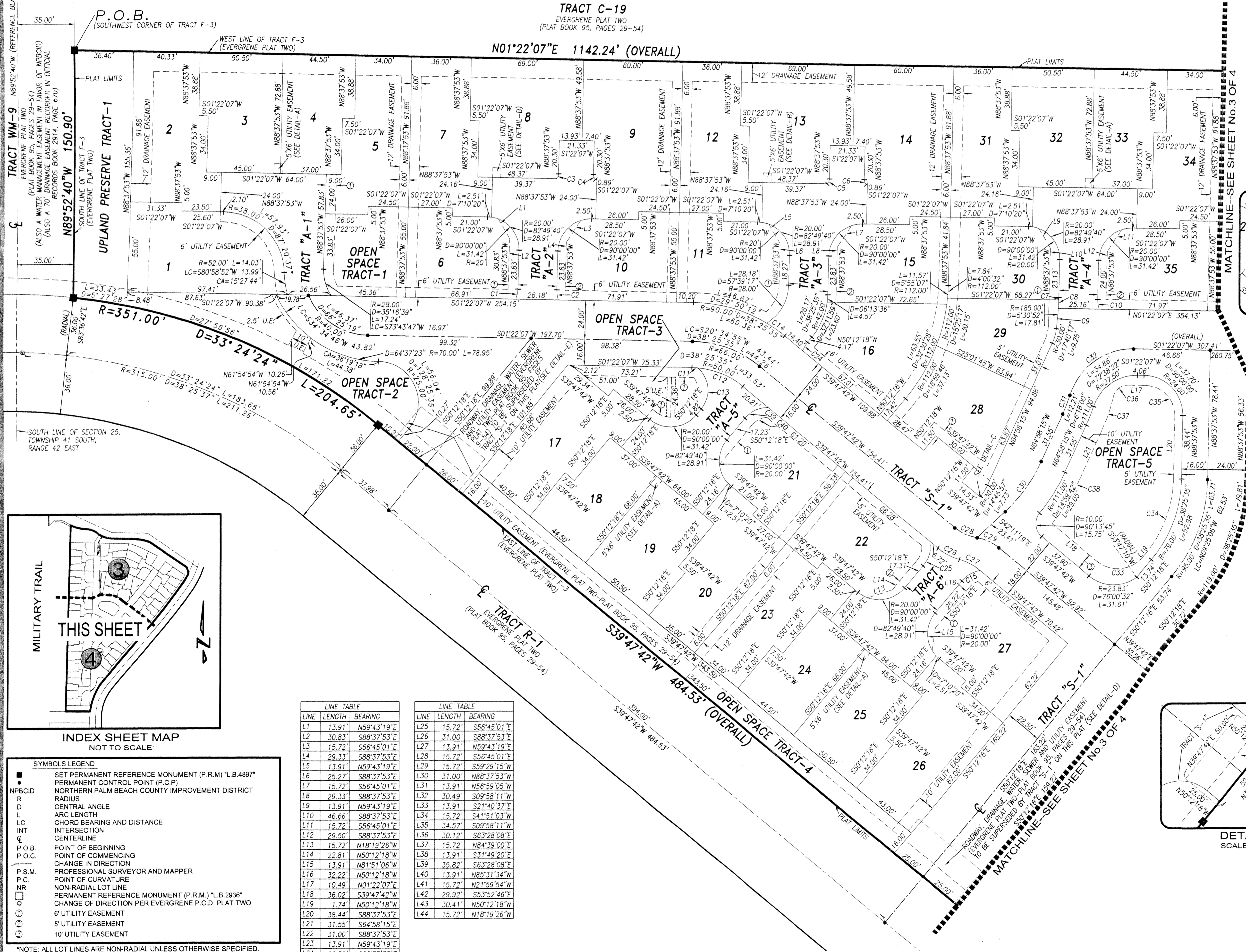
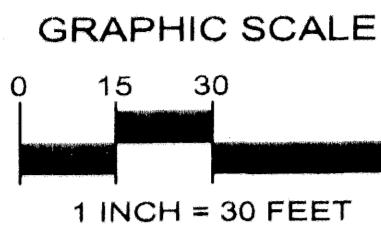


EVERGRENE P.C.D. PLAT FOUR

A REPLAT OF TRACT F-3, EVERGRENE PLAT TWO AS RECORDED IN PLAT BOOK 95, PAGES 29 THROUGH 54 INCLUSIVE, PUBLIC RECORDS OF PALM BEACH COUNTY, FLORIDA LYING IN THE SOUTHWEST QUARTER OF SECTION 25, TOWNSHIP 41 SOUTH, RANGE 42 EAST, CITY OF PALM BEACH GARDENS, PALM BEACH COUNTY, FLORIDA
SHEET No.4 OF 4 DECEMBER 2002



CURVE TABLE

CURVE	LENGTH	RADIUS	DELTA	CHORD BEARING	CHORD LENGTH
C1	6.30'	18.00'	20°02'59"	N78°36'23"W	6.27'
C2	6.30'	18.00'	20°02'59"	N81°20'37"E	6.27'
C3	3.31'	4.33'	43°48'47"	N66°43'29"W	3.23'
C4	3.31'	4.33'	43°48'47"	N69°27'43"E	3.23'
C5	3.31'	4.33'	43°48'47"	N66°43'29"W	3.23'
C6	3.31'	4.33'	43°48'47"	N69°27'43"E	3.23'
C7	1.53'	185.00'	0°28'29"	N88°23'38"W	1.53'
C8	6.87'	185.00'	2°07'39"	N87°34'03"W	6.87'
C9	12.47'	185.00'	3°51'42"	N84°34'03"W	12.47'
C10	6.12'	18.00'	19°28'16"	N81°37'59"E	6.09'
C11	3.90'	50.00'	4°28'21"	S03°36'18"W	3.90'
C12	29.63'	50.00'	33°57'14"	S22°49'05"W	29.20'
C13	27.61'	18.00'	87°52'28"	S85°51'28"W	24.98'
C14	13.49'	90.00'	8°35'23"	S35°30'01"W	13.48'
C15	13.14'	18.00'	41°48'37"	S29°17'59"E	12.85'
C16	6.12'	18.00'	19°28'16"	N78°53'45"W	6.09'
C17	6.12'	18.00'	19°28'16"	N81°37'59"E	6.09'
C18	6.12'	18.00'	19°28'16"	N78°53'45"W	6.09'
C19	16.04'	18.00'	51°03'27"	S65°50'23"W	15.51'
C20	20.98'	18.00'	66°46'05"	N30°05'06"W	19.81'
C21	6.48'	18.00'	20°38'17"	N64°11'54"W	6.45'
C22	5.47'	18.00'	17°25'37"	S41°29'30"E	5.45'
C23	6.45'	18.00'	20°32'35"	N60°28'35"W	6.42'
C24	6.01'	18.00'	19°08'45"	S59°46'41"E	5.99'
C25	16.08'	18.00'	51°10'44"	N75°47'40"W	15.55'
C26	14.69'	36.13'	23°17'54"	S28°08'45"W	14.59'
C27	14.69'	36.13'	23°17'54"	S28°08'45"W	14.59'
C28	15.01'	27.85'	30°52'24"	N24°21'30"E	14.83'
C29	15.01'	27.85'	30°52'24"	S24°21'30"W	14.83'
C30	37.77'	95.00'	22°46'56"	N53°34'47"W	37.53'
C31	12.25'	95.00'	7°23'20"	N68°39'55"W	12.24'
C32	51.47'	40.00'	73°43'42"	S35°29'44"E	47.99'
C33	31.42'	20.00'	90°00'00"	N05°12'18"W	28.28'
C34	49.63'	74.00'	38°25'35"	N69°25'06"W	48.70'
C35	28.27'	18.00'	90°00'00"	S46°22'07"W	25.46'
C36	12.12'	9.00'	77°11'19"	S37°13'33"E	11.23'
C37	22.91'	121.00'	10°50'58"	N70°23'44"W	22.88'
C38	31.67'	121.00'	14°59'42"	N57°28'24"W	31.58'
C39	16.19'	18.00'	51°32'55"	N24°25'50"W	15.65'
C40	10.32'	12.00'	49°17'30"	N25°33'33"W	10.01'

LINE TABLE

LINE	LENGTH	BEARING
L1	13.91'	N59°43'19"E
L2	30.83'	S88°37'53"E
L3	15.72'	S56°45'01"E
L4	29.33'	S88°37'53"E
L5	13.91'	N59°43'19"E
L6	25.27'	S88°37'53"E
L7	15.72'	S56°45'01"E
L8	29.33'	S88°37'53"E
L9	13.91'	N59°43'19"E
L10	46.66'	S88°37'53"E
L11	15.72'	S56°45'01"E
L12	29.50'	S88°37'53"E
L13	15.72'	N18°19'26"W
L14	22.81'	N50°12'18"W
L15	13.91'	N81°51'06"W
L16	32.22'	N50°12'18"W
L17	10.49'	N01°22'07"E
L18	36.02'	S39°47'42"W
L19	1.74'	N50°12'18"W
L20	38.44'	S88°37'53"E
L21	31.55'	S64°58'15"E
L22	31.00'	S88°37'53"E
L23	13.91'	N59°43'19"E
L24	29.50'	S88°37'53"E

LINE TABLE

LINE	LENGTH	BEARING
L25	15.72'	S56°45'01"E
L26	31.00'	S88°37'53"E
L27	13.91'	N59°43'19"E
L28	15.72'	S56°45'01"E
L29	15.72'	S59°29'15"W
L30	31.00'	N88°37'53"W
L31	13.91'	N56°59'05"W
L32	30.49'	S09°58'11"W
L33	13.91'	S21°40'37"E
L34	15.72'	S41°51'03"W
L35	34.57'	S09°58'11"W
L36	30.12'	S63°28'08"E
L37	15.72'	N84°39'00"E
L38	13.91'	S31°49'20"W
L39	35.82'	S63°28'08"E
L40	13.91'	N85°31'34"W
L41	15.72'	N21°59'54"W
L42	29.92'	S53°52'46"E
L43	30.41'	N50°12'18"W
L44	15.72'	N18°19'26"W

- SYMBOLS LEGEND
- SET PERMANENT REFERENCE MONUMENT (P.R.M.) "L.B. 4897"
 - PERMANENT CONTROL POINT (P.C.P.)
 - NORTHERN PALM BEACH COUNTY IMPROVEMENT DISTRICT
 - RADIUS
 - CENTRAL ANGLE
 - ARC LENGTH
 - CHORD BEARING AND DISTANCE
 - INT
 - INTERSECTION
 - CENTERLINE
 - P.O.B.
 - P.O.C.
 - CHANGE IN DIRECTION
 - P.S.M.
 - POINT OF COMMENCING
 - NR
 - NON-RADIAL LOT LINE
 - PERMANENT REFERENCE MONUMENT (P.R.M.) "L.B. 2936"
 - CHANGE OF DIRECTION PER EVERGRENE P.C.D. PLAT TWO
 - 6' UTILITY EASEMENT
 - 5' UTILITY EASEMENT
 - 10' UTILITY EASEMENT
- *NOTE: ALL LOT LINES ARE NON-RADIAL UNLESS OTHERWISE SPECIFIED.

Keshavarz & Associates, Inc.
 CONSULTING ENGINEERS - SURVEYORS
 1280 N. Congress Avenue, Suite 206
 West Palm Beach, Florida 33409
 Tel: (561) 689-8600 Fax: (561) 689-7476 LB 4897
 THIS INSTRUMENT WAS PREPARED BY MANUEL A. GUTIERREZ, PSM
 PROFESSIONAL SURVEYOR AND MAPPER NO. LS 4102
 IN THE OFFICES OF KESHAVARZ & ASSOCIATES, INC.
 (L:\A\F\5\01749\49\749_PLAT FOUR_11/23/02_09:37:01 AM.EST